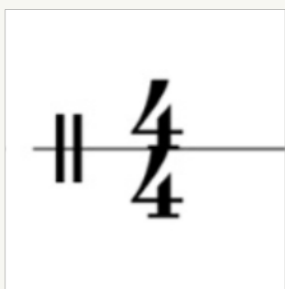


# Rhythm Practice

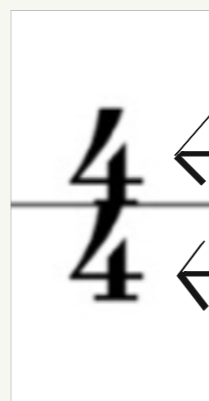
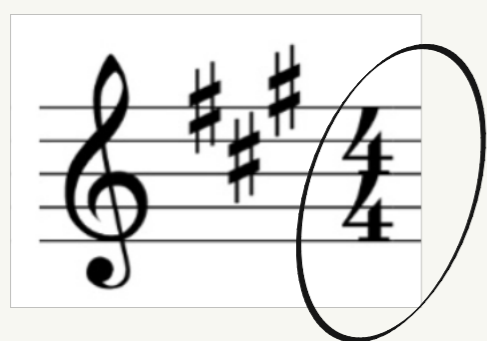
## Time Signatures

How they look on these worksheets



They both mean the same thing and you will see different numbers on different pieces. Here's what they mean:

How they will look in your music



Top number: beats per measure

Bottom number: note value that is the beat

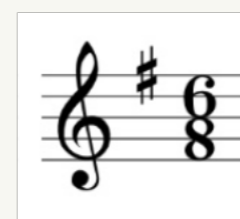
## Other Common Time Signatures



← 2 beats per measure  
← 1/4 note is the beat



← 3 beats per measure  
← 1/4 note is the beat



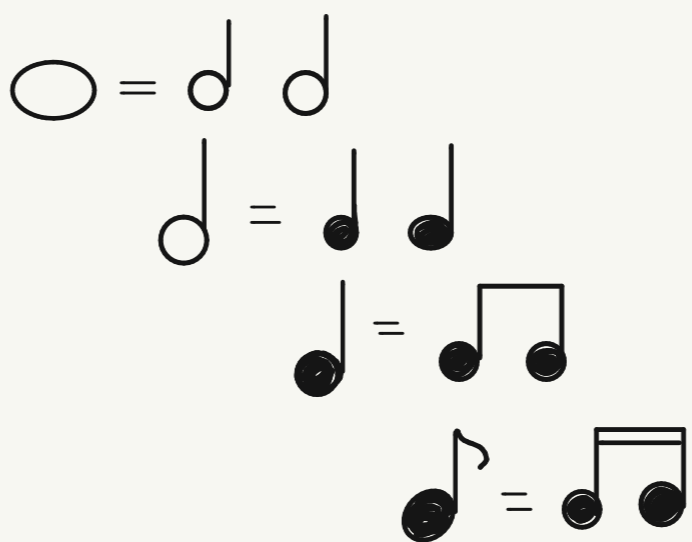
← 6 beats per measure  
← 1/8 note is the beat

## Note Values

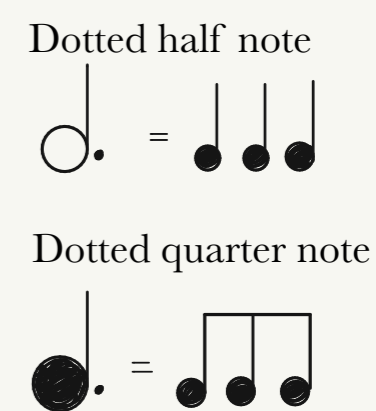
### Note Names and Beats

Whole note		4 beats
Half note ( $1/2$ )		2 beats
Quarter note ( $1/4$ )		1 beat
Eighth note ( $1/8$ )		$1/2$ beat
Sixteenth note ( $1/16$ )		$1/4$ beat

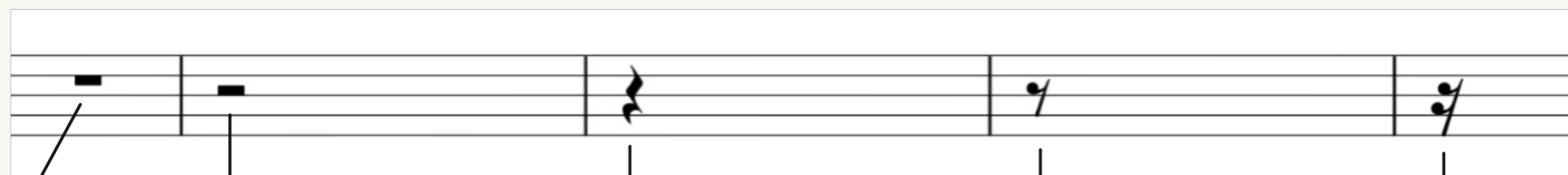
### Note Value Tree



### Dotted Rhythms



Rests:



Whole rest

Half rest

Quarter rest

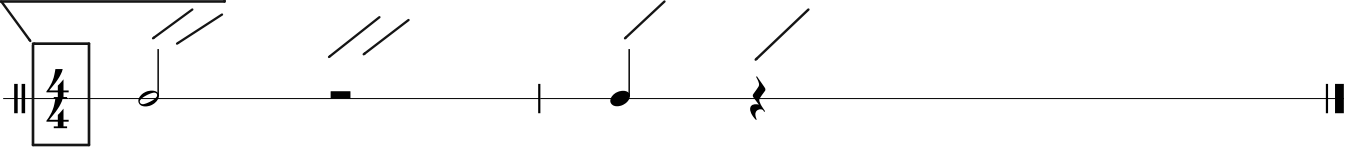
Eighth rest

Sixteenth rest

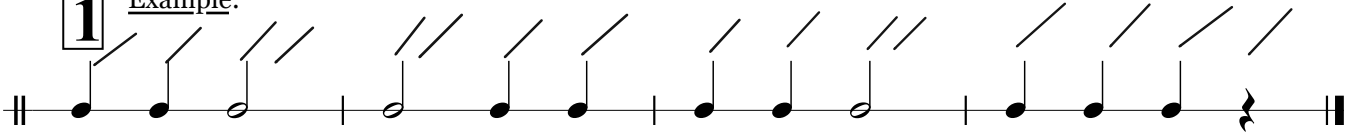
# Rhythm Practice #1

Time Signature  
4 beats per measure  
1/4 note is the beat

Here are the beat marks for each note value:

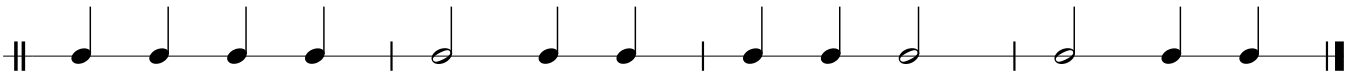


**1** Example:

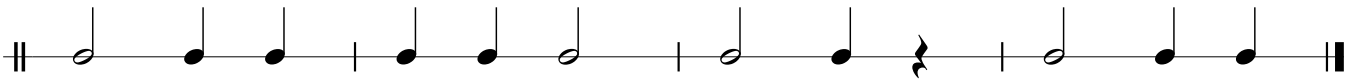


Your turn! Mark the number of beats for each note as demonstrated above. Then clap the rhythm and play it on an open string on your instrument.

**2**



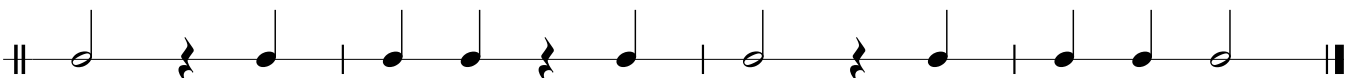
**3**



**4**



**5**



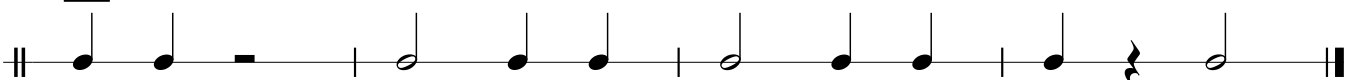
**6**



**7**



**8**

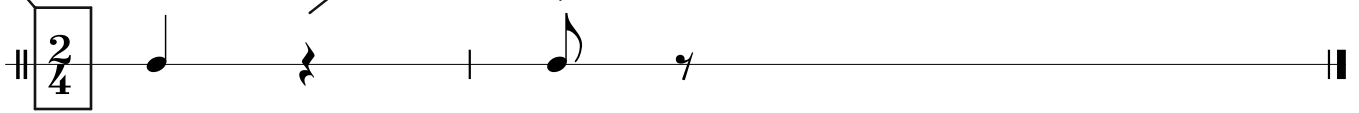




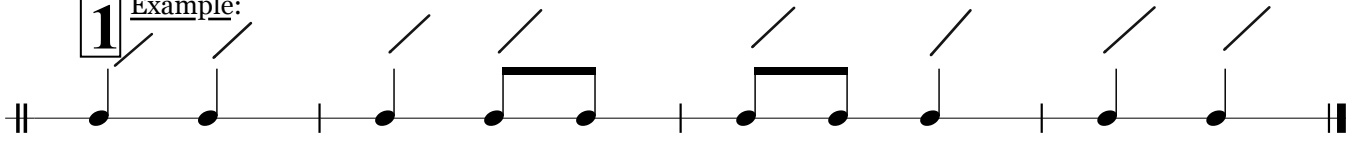
# Rhythm Practice #3

Time Signature  
2 beats per measure  
1/4 note is the beat

Here are the beat marks for each note value:

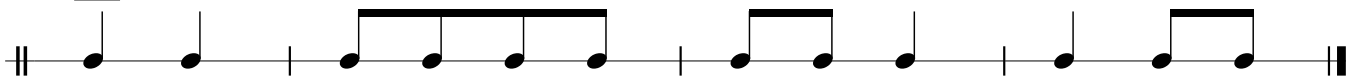


**1** Example:

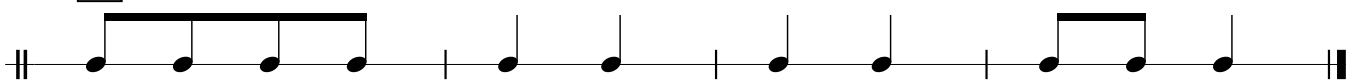


Your turn! Mark the number of beats for each note as demonstrated above. Then clap the rhythm and play it on an open string on your instrument.

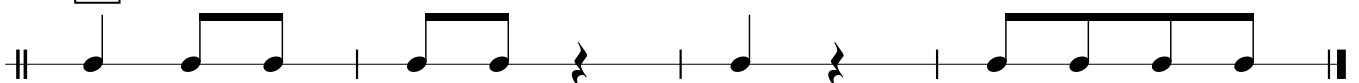
**2**



**3**



**4**



**5**



**6**



**7**



**8**



# Rhythm Practice #4

Time Signature  
3 beats per measure  
1/4 note is the beat

Here are the beat marks for each note value:

A musical staff in 3/4 time. The notes and their corresponding slash marks are: a quarter note with one slash, a half note with two slashes, a quarter rest with one slash, a quarter note with one slash, and a quarter rest with one slash.

**1** Example:

A musical staff showing an example rhythm pattern: quarter, quarter, quarter, quarter, half, quarter, quarter, quarter, quarter, quarter.

Your turn! Mark the number of beats for each note as demonstrated above. Then clap the rhythm and play it on an open string on your instrument.

**2**

A musical staff for exercise 2: quarter, half, quarter, quarter, quarter, half, quarter, quarter, half.

**3**

A musical staff for exercise 3: half, quarter, quarter, quarter, half, quarter, quarter, quarter.

**4**

A musical staff for exercise 4: quarter, quarter, quarter, half, quarter, half, quarter, quarter, quarter.

**5**

A musical staff for exercise 5: quarter, quarter, quarter, half, quarter, quarter, quarter, quarter, quarter, quarter.

**6**

A musical staff for exercise 6: quarter, half, quarter, half, quarter, quarter, quarter, quarter, half.

**7**

A musical staff for exercise 7: quarter, quarter, quarter, half, quarter, quarter, quarter, half, half.

**8**

A musical staff for exercise 8: quarter, quarter, quarter, half, quarter, half, half, quarter.

# Rhythm Practice #5

Time Signature  
3 beats per measure  
1/4 note is the beat

Here are the beat marks for each note value:

**1** Example:

Your turn! Mark the number of beats for each note as demonstrated above. Then clap the rhythm and play it on an open string on your instrument.

**2**

**3**

**4**

**5**

**6**

**7**

**8**

